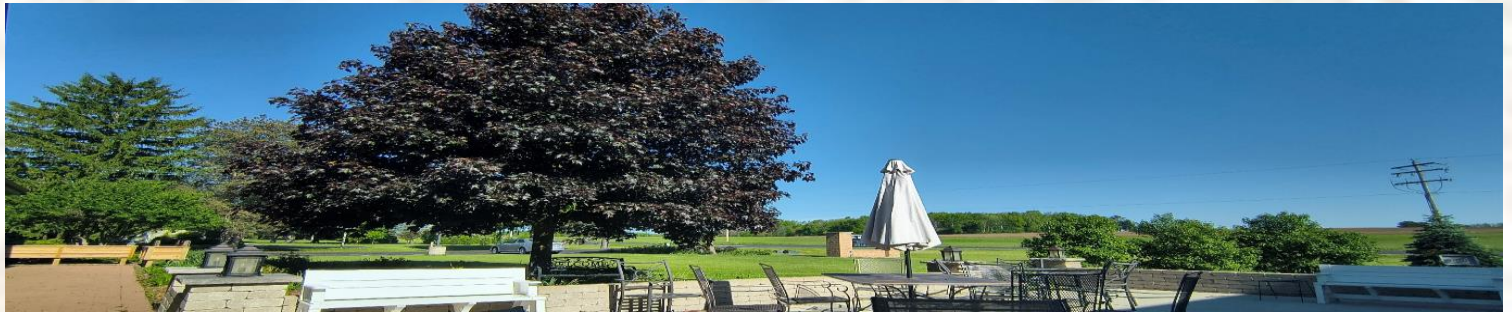
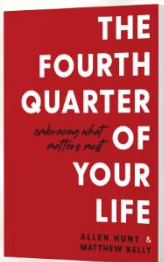




From Pastor Tom:



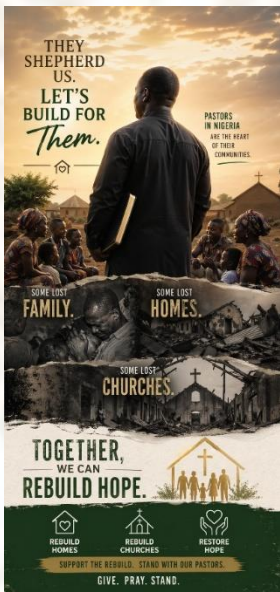
“**Living Generously**” is our stewardship theme for 2026. I’m reading a book called “The Fourth Quarter of Life: embracing what matters most. One of the exercises it presents is creating a 25-year plan in increments of 5-year segments. So, for me, I’m 59, so age 59-64. It has you put in the ages of your spouse and children. Also, where you live and how the house would function in those first 5 years (While we still have most of our children at home, but in the following 5 years we may not have anyone at home, what a concept!) Then you examine the major areas of your life, one being Personal Finances/Financial Goals. This shifts as you age. I/we have been in the “Accumulation Phase” since I was 10 years old (paper route, mowing lawns, caddying). But once the children are independent and that saving leads to you being financially independent, you are then able to live simply and give generously. Perhaps one’s standard of living was higher at one point (2 cars, more stuff, more house, more expenses) but now you live on less, maybe even downsizing or giving stuff away. In fact, perhaps you have lowered your standard to living and *raised your standard of giving*.



Another section of the book has you define 1 or 2 virtues that you will focus on in these 25 years. Yes, you know what I chose: peace/shalom and generosity. I believe Jesus’ self-less servant nature as described in Philippians 2 (we explored a few weeks ago) demonstrates to us the way of life that we are to be peacemakers, giving ourselves away. Jesus didn’t have any significant material possessions. He was not bound by maintaining a house (or multiple), cars, lawns, etc. He was free, mobile, unattached, not busy with a bunch of appointments or commitments. He could constantly seize the moment, which became “holy moments”, as this author writes about.

We have a “Holy Moment” right now and many of you are joining along in seizing it. 24 pastors are living as displaced persons in other people’s homes until they have the resources to rebuild their home that was destroyed. Of the \$80,000 we are seeking to raise, you have contributed over \$30,000 so far.... wow! Way to go!





Is the virtue of generosity important to you? Are you able to give, something, to help a pastor and church, rebuild their lives and give them hope for a future? We all have choices. Most every exchange of money, or purchase we have, is a choice. Unlike most of the world, we as Americans have many choices and flexibility on how we spend our money. Again, consider an act of selflessness and generosity by giving to someone in desperate need, today. Checks can be made to St. Olaf with “ETCH for Africa” in the memo.

*Let us pray: Lord, make us instruments of your peace. Where there is hatred, let us sow love...where there is despair, hope. Grant us the compassion to “suffer with” our brothers and sisters in Christ in Nigeria. Holy Spirit, tug on our hearts to give, not out of compulsion, but out of compassion while being a cheerful giver, in Jesus’ name we pray, Amen.*

## JUNE LAY MINISTRY SCHEDULE

Date	Asst. Minister	Musicians
Sat., June 6 5:00 p.m.	Cindy Schlieve	Clara Birkel Steve Stretz
Sun., June 7 9:00 a.m.	<b>Assistant Needed</b>	Clara Birkel Garrett Monis
Sat., June 13 5:00 p.m.	Mary Hershoff	Clara Birkel Steve Stretz
Sun., June 14 9:00 a.m.	Mary Hershoff	Clara Birkel Steve Stretz
Sat., June 20 5:00 p.m.	Cindy Schlieve	Garrett Monis Cathy Paquette
Sun., June 21 9:00 a.m.	<b>Assistant Needed</b>	Garrett Monis Cathy Paquette
Sat., June 27 5:00 p.m.	Scott Siegrist	Sam Pietz
Sun., June 28 9:00 a.m.	Scott Siegrist	Sam Pietz Steve Stretz

**June Altar Guild:** Jane Christenson  
**June Counter:** Paul Christenson, Sue Grulke

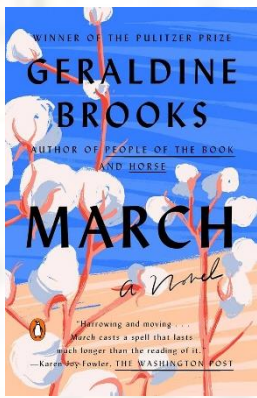
### JUNE ANNIVERSARIES

1 Curt & Heather Gundrum (24)  
 5 George & Elaine Monis (61)  
 11 Randy & Barbara Rogness (44)  
 15 Austin & Ashley Brewer (2)  
 16 Robert & Daun Driebel (31)  
 21 Jeffrey & Mary Millikin (36)  
 23 Allen & Patricia Warnecke (25)  
 25 Bernard & Deborah Krahn (49)  
 27 Michael & Kimberly Yohn (6)

### JUNE BIRTHDAYS

1 Chloe Monis  
 4 June Sumnicht  
 6 Bernard Krahn, Randy Rogness  
 7 Todd Birkel, Keira Kuzenski  
 9 Reece Solveson, Barbara Rogness  
 10 Lyn Johnson, Paul Thusius  
 11 Ann Marie Kraemer  
 14 Kim Bingen  
 15 Mark Christenson, Dick Feutz  
 18 Jerrold Green  
 19 Braeden Christenson  
 21 Sheila Parker, Kelly Siegmann, Steve Stretz  
 22 Kari Weber  
 25 Elaine Monis, Luke Otto  
 27 Cecelia Kuzenski, Scott Siegrist  
 30 Rebecca Christenson





## SOAR BOOK CLUB FOR JUNE

Thursday, June 11<sup>th</sup> @ noon

SOAR Book Club meets Thursday, June 11<sup>th</sup> at noon at St. Olaf's. June's book selection is *March* by Geraldine Brooks. All are welcome.

## CONGRATULATIONS GRADUATES!

May God continue to bless and watch over you as you complete another milestone and begin a new chapter on your journey of life and faith. We congratulate your parents also for being your biggest supporters and walking alongside you.



## SCHOLARSHIP FUND

The St. Olaf scholarship fund was created in 1998 through a generous donation by an anonymous donor. This donation, along with others, has been placed in an endowed fund that continues to grow its principal each year.

Using the endowed fund distribution and contributions from the scrap metal and scrip funds, the following students were awarded scholarships for the 2026-27 school year:

**Andrew Hoffmann, Gavin Monis, Olivia Otto, Owen Otto, Sally Pietz, Ella Smithyman, Catherine Leszcynski, and Lily Mireau**

What an amazing accomplishment and blessing!

If you would like to be part of this exciting endeavor, you are encouraged to consider making a donation to either the endowed scholarship fund (continues to grow) or the annual scholarship distribution. This could be done in honor of an important event in someone's life (Christmas gift, birthday, anniversary, etc.) or in memory of a loved one. Also, Qualified Charitable Distributions could be dedicated to this fund.

For more information or to make a donation, please contact Linda Feutz (feutzl@gmail.com or call/ text at 262-224-0462)

Let's embrace our future generations and help support their education!



**SUMMER HOURS**  
▶ for ◀  
**CHURCH OFFICE**

The St. Olaf secretary will be out of the office June 8 – July 15. You can still reach her via email, [stolafsecretary@gmail.com](mailto:stolafsecretary@gmail.com), but she will not be in the office to take phone calls.

## **News from St. Olaf Women of Grace** **June 2026**

### **Women of Grace Meeting**

The next meeting of the Women of Grace (WOG) will be on the **THIRD Monday of September (09-21-26) at 3:00 p.m.** in the Fellowship Hall. One of our topics will be the 2026 Lutefisk Dinner/Bake Sale/Scandi Butik. Other topics will be discussed as they may be presented. We welcome all members to attend our meetings and offer suggestions. Please feel free to contact me if you have comments or suggestions but cannot attend the meeting. Light refreshments will be available.

### **Searchers Bible Study Group**

The Searchers Bible study group meets every Tuesday at 9:00 a.m. at the home of Jane Christenson, most usually. We are currently studying the book of First Peter. Marilyn Carlson and Barb Rogness are co-leading this study, and each has a wonderful selection of materials to share with us. As always, our discussions will be interesting, enlightening, and a great experience to share with other women.

The *Gather* Magazine study that we will be using for the summer months (June, July, August) is entitled "I am Worthy" written by the Rev. Sarah Olson-Smith. **The study on June 9, 2026 will be held at the home of Cindy Schlieve.** The series is described as follows: "This summer, Women of the ELCA participants will gather in Des Moines, Iowa, under the theme "I am worthy." When Nobel Peace Prize winner Leymah Gbowee spoke in 2017, she invited WELCA participants to reclaim space for women and girls to lead and love in bold ways. This three-part Bible study will help us to define who we are, what we can be, and what we do in the world, in light of our God-given giftedness, identities and relationships."

This first session is entitled "**I am created in God's image. No matter what anyone else says**" and is described as follows: "We'll begin with the story of God's creation and the "very goodness" that is spoken over every human being. The study will then turn to various scripture texts that have been used to undermine, silence and degrade women for centuries. Unpacking the ways these verses have been read against women shines a light on the realities of sexism and the ways that, for too long, the Bible has been used to prop up the oppression of women. But we will also hear how those same scriptures can be read as invitations to new freedom, community and vocation for people, regardless of gender, for all people were made in God's image."

Copies of the study will be available for anyone who does not subscribe to the magazine. Please feel free to join us for what promises to once again be an interesting and helpful study.

### **Other Events this Summer**

There are a number of events coming up this summer. To name a few: Ice Cream Social/Car show on Sunday July 26, Blue Grass Festival on August 9. There will be opportunities to offer our help on most of these events. At the very least, I hope many of you can attend many of these events. They are a great opportunity to get to know our members better and meet new people as well. More information will be provided when it is available.

### **St. Ben's Meal**

This year the meal that we serve for people in need at St. Ben's in Milwaukee will be on June 16, 2026. This is an event that the women of St. Olaf have been doing for many, many years. St. Ben's is a Catholic

Church located at 930 W. State Street in Milwaukee. The program is run by the Capuchin Community. St. Olaf prepares and helps serve a meal on the third Tuesday of June each year. This year we have been asked to plan for 200 people. The people served, or guests as they are called, need some extra help to provide food for themselves and their families. Some of the guests are homeless, but not all. There are many singles in attendance but there are also some families. In these times of financial difficulties for many, this type of program is one way that we can offer help to others in need.

The menu we prepare is the same each year: Beef Stew, Mixed Lettuce Salad, and Cookies that are three inches in size. The food will be purchased from the Piggly Wiggly store in Watertown. Financial donations are appreciated. The remainder of the cost will be covered by the St. Olaf Women of Grace. We do ask for donations of cookies from our members along with help in preparing and serving the meal. There is a sign-up poster located in the gathering area of the church to check types of volunteer help needed. Please check it out and sign up to help in any way that you may be able to.

“Sharing God’s Love . . . Caring for Community” is St. Olaf’s motto. This event is a very important way we can live into our goals.

**Wishing you Peace, Love, Joy, and Good Health,**

Cindy J. Schlieve, President

262-490-7134; [jschlieve@wi.rr.com](mailto:jschlieve@wi.rr.com)

***“Finally, brothers, whatever is true, whatever is noble, whatever is right, whatever is pure, whatever is lovely, whatever is admirable – if anything is excellent or praiseworthy – think about such things. Whatever you have learned or received or heard from me or seen in me – put it into practice. And the God of peace will be with you.”***  
**Philippians 4:8-9 (NIV)**



## CARING FOR COMMUNITY

from Steve Stretz

**First of all:** it looks like I will be needing some help over the next month or two delivering to *All Peoples* on Wednesdays. Please let me know if you can take a week for me. You would drop off the items at 11:00-11:30 am and you are welcomed to stay and help for a bit or just drop things off.

**Secondly** and as important: **Thank you so much** for supporting our partner church *All Peoples Gathering Church*. Your contributions are helping so many people. I wish more of you could come and meet the people you are helping. This could be a time when you take things down when I can't or I'd love to have you ride along with me. It's 3-4 hours of very rewarding time.

Today, May 27<sup>th</sup>, there was a bounty of wonderful groceries in the entry way at church. It filled the Jeep (I forgot to take a picture). There were canned goods, hygiene supplies, nectarines, and more. All were dropped off by Walmart, I think. God bless you for that. There were also other donations along with bakery from Piggly Wiggly. It's all wonderful.



Today I helped at the garden also, as I usually do. The line was one of the longest I have seen. You can see it extends all the way back to the white arrow. Fortunately, there was enough produce, eggs, sour cream, etc. from various groups and agencies for most of the people although things got pretty slim for the end of the line.

You can't help but get close to the people we help there. We often joke around but also pray for each other. Caring for community.

# Youth Ministry News

June 2026



## COME JOIN US FOR A PRAYER SAFARI!

Learn about talking to God while exploring His creation. Enjoy crafts, games, Bible time, snacks, and lunch—this is an adventure you won't want to miss! Ages 3 years through entering 6th grade.

Saturday, August 1 10:00 AM - 3:00 PM  
(Preschool: 10:00 AM - 1:00 PM)

## VBS HELP NEEDED

- Decorating
- Lunch and snacks
- Music or drama
- Planning and teaching (Bible, games, science activities, crafts)
- Summer prep. (photocopies, nametags, setup)



Scan QR to register.  
Contact Kris with questions or to help out.

## BLUEGRASS & SWEETCORN FESTIVAL

Sunday, August 9th, Noon - 5:00 PM  
Youth fundraiser save-the-date



## 2026 GRADUATES...

Be sure to submit your photos and graduation info for our graduate recognition during worship service, Sunday June 7th



## ICE CREAM SOCIAL

Sunday, July 26th, Noon - 5:00 PM  
Youth fundraiser save-the-date



## ST OLAF YOUTH LEADERSHIP TEAM

Sunday School - Kris Pietz stolafchildren@gmail.com

Confirmation Youth - Pastor Tom Pietz pietztom1@gmail.com

Teen Discipleship - Scott Siegrist stolafyouthleader@gmail.com

# Confirmation - 2026 -





**ST. OLAF'S**

# *Ice Cream Social & Car Show*

**Sunday - July 26 - 2026**

**12:00 p.m. – 5:00 p.m.**

**Indoor and Outdoor Seating Available**

*Share your Automotive Interests!*

*Cars, Trucks, Tractors & Motorcycles Welcome!*

**♪ Live Music ♪**

We will be serving **Hot Sandwiches,**  
**Sundaes** with Homemade Toppings,  
**Banana Splits, Milkshakes**  
and more at bargain prices!

---

**St. Olaf Lutheran Church**

**W653 Roosevelt Road**  
(Meets Hwy 0)

**Alderly · Wisconsin 53078**  
(Near Deertrack Golf Course)

**920.474.7042**

**[www.st-olaf.org](http://www.st-olaf.org)**

*Invite your  
Family and Friends!*





**VBS is coming!**

**Join us August 1  
from 10-3**

**@ St Olaf Lutheran Church**  
W653 Roosevelt Road  
Rubicon 53078

For ages 3 yrs-6th grade  
Registration Fee: None



Go to **[st-olaf.org](http://st-olaf.org)** to register,  
or email [stolafchildren@gmail.com](mailto:stolafchildren@gmail.com) with questions

2026

ST. OLAF'S COMMUNITY

# Bluegrass & Sweet Corn Festival



Free Admission

FOOD & BEVERAGE FOR PURCHASE

**SUNDAY - AUGUST 9<sup>TH</sup> - 12:00 to 5:00**

## Live Music

12:00 - 12:30pm

**GARRET & MATTHEW**



12:30 - 2:45pm

**TIN BUCKET  
Bluegrass Band**



2:45 - 3:15pm

**PT & THE SICILIAN**



3:15 - 4:30pm

**SIEGMANN FAMILY  
Bluegrass Band**



**SWEET CORN**

**SODA - BEER - WINE**

**JIM's CHICKEN DINNERS  
including potato salad**

**BRATS & HOT DOGS**  
by Rock River Masonic Lodge

**HOT SANDWICHES  
ICE CREAM SUNDAES  
& DESSERTS**  
by St Olaf Youth  
by Women of Grace

**DUNK TANK**

**CHILDREN'S GAMES**

**Rain or Shine!**

**BRING YOUR LAWN CHAIR**

**W653 ROOSEVELT ROAD · TOWN OF ASHIPUN (off Hwy 0 · 1.8 miles east of Hwy P)**  
[www.st-olaf.org](http://www.st-olaf.org)

To view the entire (larger print) calendar, go to our website [calendar](#)

Sun	Mon	Tue	Wed	Thu	Fri	Sat
31 9am - Worship 12pm - Fellowship Hall	1 6:30am - Men's Life Group - 7:30am - Weekly Prayer Group 9am - Searchers @ Jane	2 8:30am - Wednesday Morning 5pm - Mission Team Meeting 6pm - Fish Fry (Maple Inn) -	3 12pm - Book Club - Small 4pm - Music, Worship, Arts 5pm - Council Meeting	4 9am - Soup Ministry	5 5pm - Properties mtg - Small 5pm - Worship	6 5pm - Worship - Healing
7 Graduate Recognition 9am - Worship	8 Secretary off	9 6:30am - Men's Life Group - 7:30am - Weekly Prayer Group 9am - Searchers @ CINDY	10 Secretary off 8:30am - Wednesday Morning 6pm - Fish Fry (Maple Inn) -	11 Secretary off 8:30am - Wednesday Morning 6pm - Fish Fry (Maple Inn) -	12 Secretary off 8:30am - Wednesday Morning 6pm - Fish Fry (Maple Inn) -	13 Secretary off 8:30am - Wednesday Morning 6pm - Fish Fry (Maple Inn) -
14 9am - Worship - Healing	15 Prep for Meal at St. Ben's Secretary off	16 Serve Meal at St. Ben's 6:30am - Men's Life Group - 7:30am - Weekly Prayer Group 9am - Searchers @ Jane	17 Secretary off 8:30am - Wednesday Morning 6pm - Fish Fry (Maple Inn) -	18 Secretary off 8:30am - Wednesday Morning 6pm - Fish Fry (Maple Inn) -	19 Secretary off 8:30am - Wednesday Morning 6pm - Fish Fry (Maple Inn) -	20 Secretary off 8:30am - Wednesday Morning 6pm - Fish Fry (Maple Inn) -
21 HAPPY FATHER'S DAY 9am - Worship	22 8:00am-CALLER ARTICLES Secretary off	23 6:30am - Men's Life Group - 7:30am - Weekly Prayer Group 9am - Searchers @ Jane	24 Secretary off 8:30am - Wednesday Morning 4pm - Ashippun Food Pantry 6pm - Fish Fry (Maple Inn) -	25 Secretary off 8:30am - Wednesday Morning 4pm - Ashippun Food Pantry 6pm - Fish Fry (Maple Inn) -	26 Secretary off 8:30am - Wednesday Morning 4pm - Ashippun Food Pantry 6pm - Fish Fry (Maple Inn) -	27 Secretary off 8:30am - Wednesday Morning 4pm - Ashippun Food Pantry 6pm - Fish Fry (Maple Inn) -
28 9am - Worship	29 Secretary off	30 6:30am - Men's Life Group - 7:30am - Weekly Prayer Group 9am - Searchers @ Jane	1 Pr. Tom off Secretary off 8:30am - Wednesday Morning 5pm - Mission Team Meeting 6pm - Fish Fry (Maple Inn) -	2 Pr. Tom off	3 Pr. Tom off	4 Pr. Tom off 9am - Properties mtg - Small 5pm - Worship